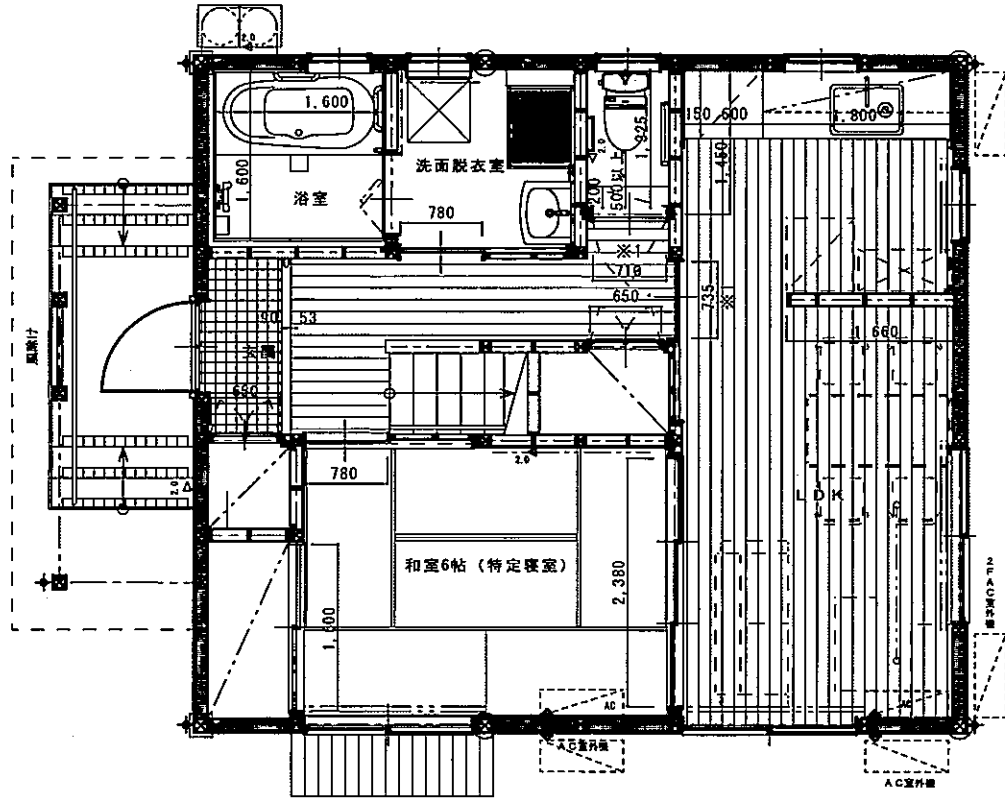




7,280									
1,365	1,820		1,820		910		2,730		
	910		910	910	155	600	155	910	910
	110	600	200	155	600	155		237	600
								73	

2,730		1,820		1,820	
1,820	910	390	73	880	477
1,365		1,820		1,365	

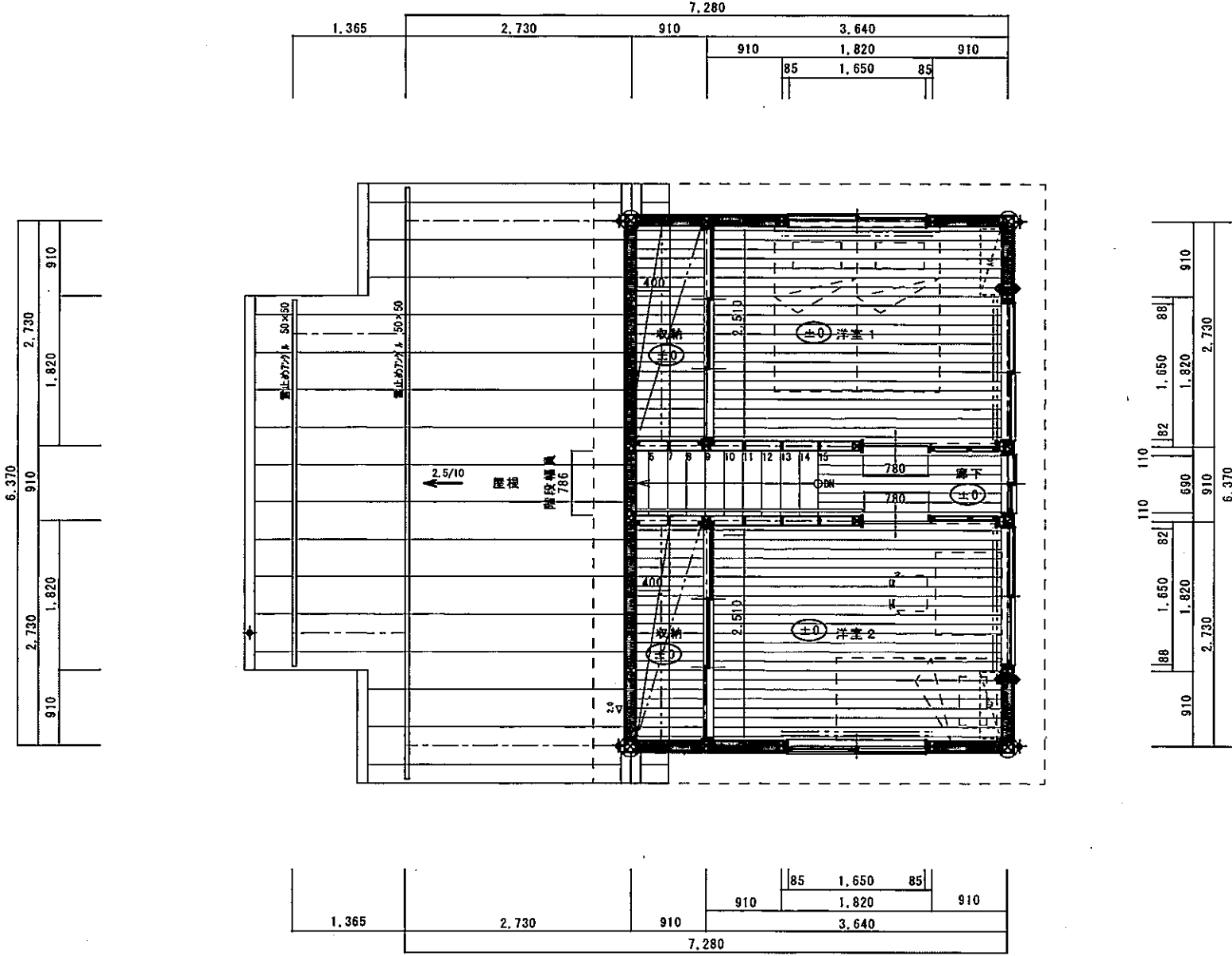
断区(6)~(15)



85	1,650	85	665	600	100
910	1,820	910	455	1,365	910
4,095			2,275		
6,370					

1,365	910	82	1,600	138	910	910	82	1,650	88	910
		1,820		3,640				2,730		
7,280										

2階建 3LDK 1階 平面図



2階建 3LDK 2階 平面図