

仮置場名:m547d013 北棚1

仮置場所在地:浪江町大字棚塩字北棚114外

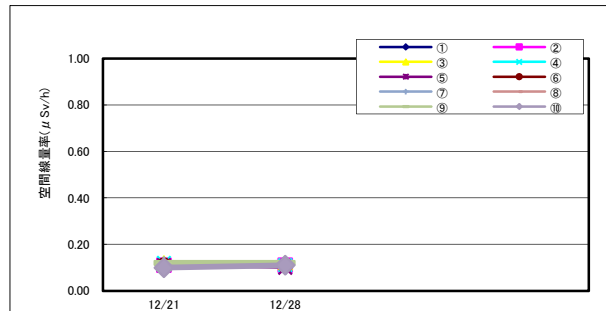
1. 点検結果

	12/21	12/28								適用
通常巡視	△	△								
緊急点検	-	-								

備考 全ての点検項目に異常がない場合:「○」、一つでも要注意項目がある場合:「△」、早期に改善を要する場合:「×」

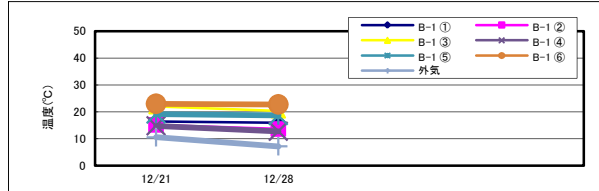
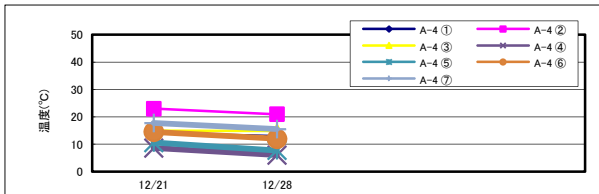
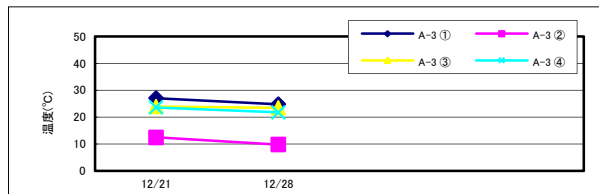
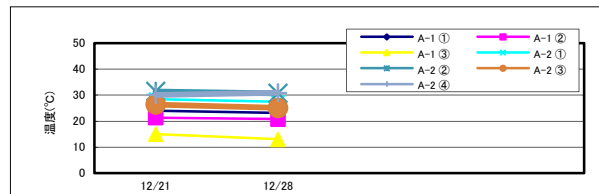
2. 空間線量率 単位:  $\mu$ Sv/h

	12/21	12/28			
①	0.11	0.11			
②	0.11	0.11			
③	0.12	0.12			
④	0.12	0.11			
⑤	0.11	0.10			
⑥	0.11	0.11			
⑦	0.12	0.12			
⑧	0.12	0.11			
⑨	0.12	0.12			
⑩	0.10	0.11			



3. 除去物内部温度 単位: °C

	12/21	12/28			
A-1	①	24.0	23.1		
	②	21.3	20.8		
	③	15.0	13.0		
A-2	①	28.4	27.4		
	②	31.4	30.7		
	③	26.4	25.1		
	④	30.1	30.9		
A-3	①	27.1	24.8		
	②	12.5	9.8		
	③	24.0	23.5		
	④	23.6	21.8		
A-4	①	14.0	12.9		
	②	23.0	20.9		
	③	14.9	14.8		
	④	8.6	6.0		
	⑤	10.6	7.7		
	⑥	14.5	12.0		
	⑦	17.7	15.5		
B-1	①	16.4	16.0		
	②	15.2	13.7		
	③	22.0	20.4		
	④	14.8	12.8		
	⑤	19.2	18.7		
	⑥	23.0	22.8		
外気	10.6	7.2			



4. 除去物一酸化炭素(CO)濃度 単位: ppm

	12/21	12/28			
-	-	-			
-	-	-			

〔メタン濃度〕 単位: %

地点	12/21	12/28			
-	-	-			
-	-	-			

5. 地下水(塩ビ孔口からの水位) 単位: m

	12/21	12/28			
地下水①	0.46	0.47			

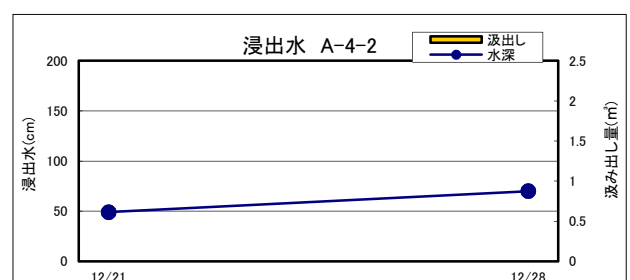
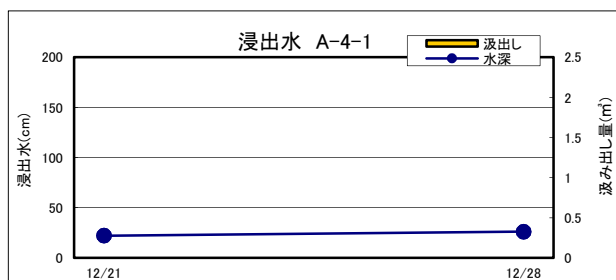
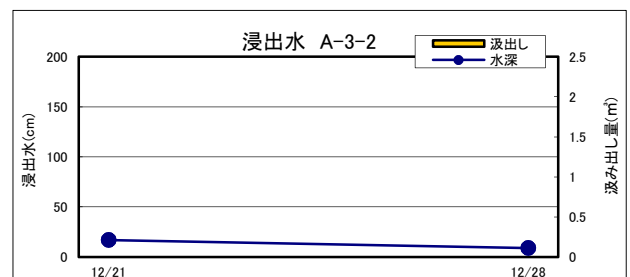
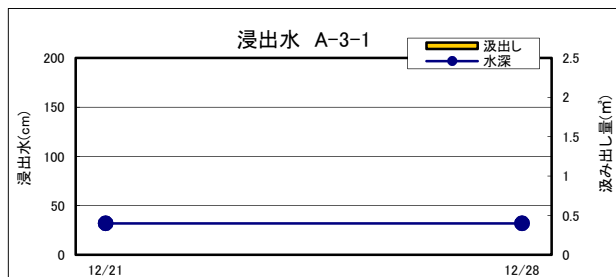
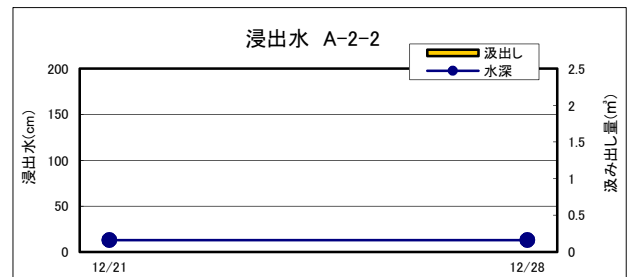
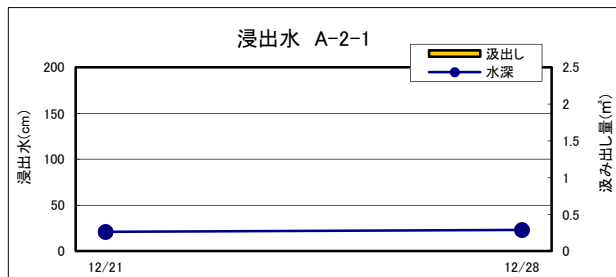
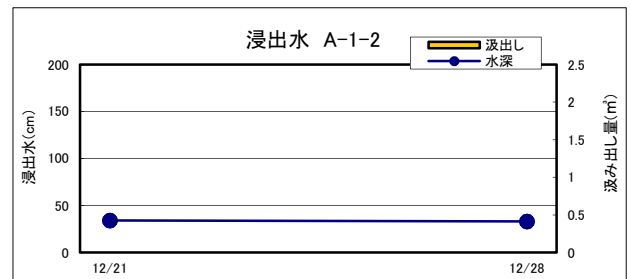
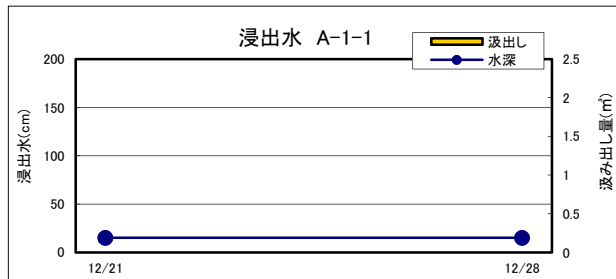
6. 浸出水

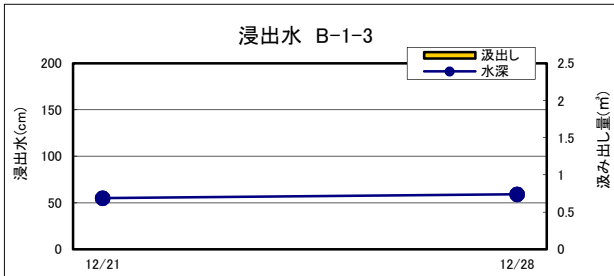
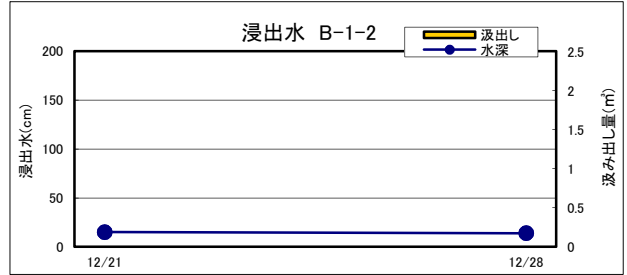
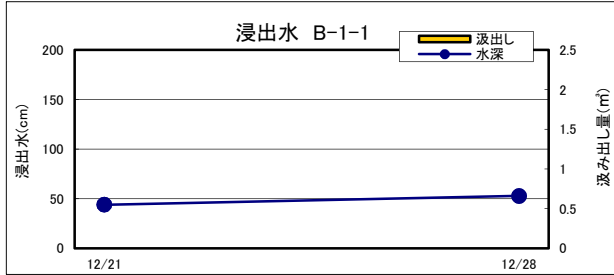
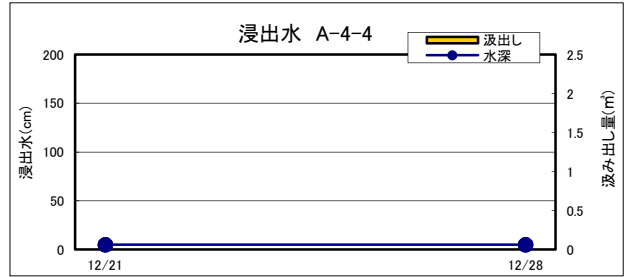
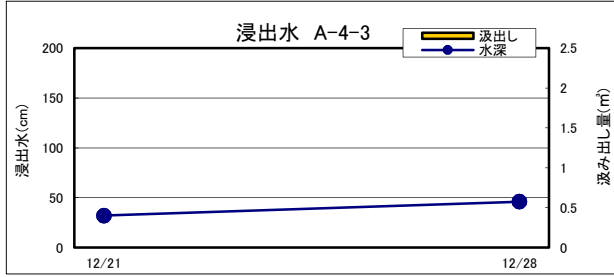
〔水深〕 単位:cm

	孔底	12/21	12/28			
A-1-1	245	15	15			
A-1-2	249	34	33			
A-2-1	237	21	23			
A-2-2	247	13	13			
A-3-1	246	32	32			
A-3-2	246	17	9			
A-4-1	244	22	26			
A-4-2	240	49	70			
A-4-3	250	32	46			
A-4-4	242	5	5			
B-1-1	245	44	53			
B-1-2	245	15	14			
B-1-3	243	55	59			

〔汲み出し量〕 単位:m<sup>3</sup>

	12/21	12/28			
A-1-1	-	-			
A-1-2	-	-			
A-2-1	-	-			
A-2-2	-	-			
A-3-1	-	-			
A-3-2	-	-			
A-4-1	-	-			
A-4-2	-	-			
A-4-3	-	-			
A-4-4	-	-			
B-1-1	-	-			
B-1-2	-	-			
B-1-3	-	-			

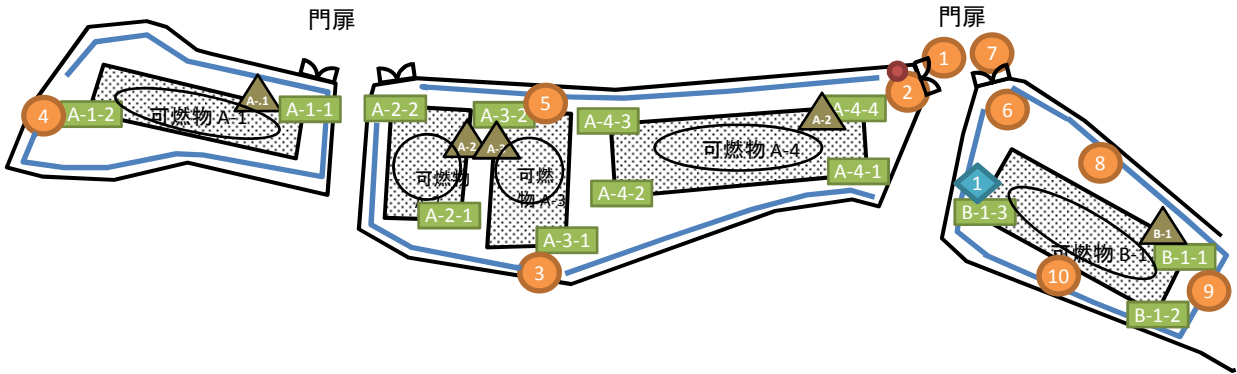




	セシウム-134 (Bq/L)		セシウム-137 (Bq/L)		濃度割合	採取月日	測定月日	排水月日	排水量 m <sup>3</sup>
	測定値	検出下限値	測定値	検出下限値					
地下水①	ND	1	ND	1	0.028	12/21	12/25	-	-
浸出水A-1-1	ND	1	ND	1	0.028	12/22	12/25	-	-
浸出水A-1-2	ND	1	ND	1	0.028	12/22	12/25	-	-
浸出水A-2-1	ND	1	ND	1	0.028	12/22	12/25	-	-
浸出水A-2-2	ND	1	ND	1	0.028	12/22	12/25	-	-
浸出水A-3-1	ND	1	ND	1	0.028	12/22	12/25	-	-
浸出水A-3-2	ND	1	ND	1	0.028	12/22	12/25	-	-
浸出水A-4-1	ND	1	ND	1	0.028	12/22	12/25	-	-
浸出水A-4-2	ND	1	ND	1	0.028	12/22	12/25	-	-
浸出水A-4-3	ND	1	ND	1	0.028	12/22	12/25	-	-
浸出水A-4-4	ND	1	ND	1	0.028	12/22	12/25	-	-
浸出水A-5-1	ND	1	ND	1	0.028	12/28	12/30	-	-
浸出水A-5-2	ND	1	ND	1	0.028	12/22	12/25	-	-
浸出水B-1-1	ND	1	ND	1	0.028	12/28	12/30	-	-
浸出水B-1-2	ND	1	ND	1	0.028	12/28	12/30	-	-
浸出水B-1-3	ND	1	ND	1	0.028	12/28	12/30	-	-



○ 22 廃棄物の上部に溜まり水が点在



凡例			
① ~ ⑤	: 空間線量率	◆	: 地下水
▲	: 温度	—	: 雨水集排水溝
■	: 浸出水	●	: 消火設備